

SHIELDED SMD POWER INDUCTORS / SCI TYPE

FEATURES

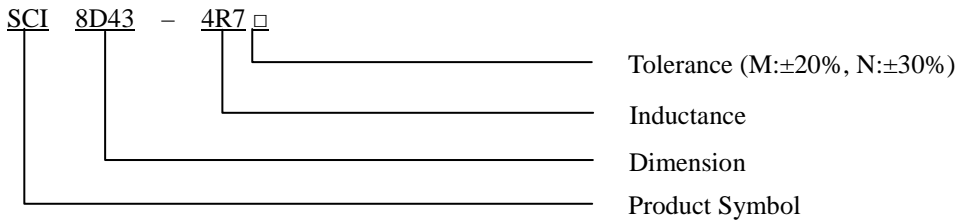
- ◆ Low DC resistance
- ◆ Suitable for large currents
- ◆ Available in magnetically shielded
- ◆ Small size with the electrode attached to it



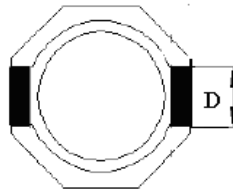
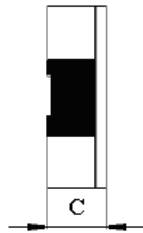
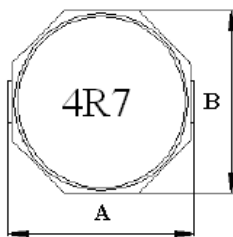
APPLICATIONS

- ◆ Power supply for VTRs.
- ◆ Portable communication equipment.
- ◆ LCD televisions.
- ◆ DC to DC converters, etc.

ORDERING CODE



DIMENSIONS (UNIT: mm)



A	9.5 (MAX)	m/m
B	8.4 (MAX)	m/m
C	5.0 (MAX)	m/m
D	2.5 (REF)	m/m

SHIELDED SMD POWER INDUCTORS / SCI TYPE

ELECTRICAL CHARACTERISTICS FOR SCI8D43

Part No.	Inductance (uH)	RDC (Ω)	IDC (A)
SCI8D43-1R0 □	1.0	0.016	6.00
SCI8D43-4R7 □	4.7	0.019	5.37
SCI8D43-6R8 □	6.8	0.040	4.50
SCI8D43-100 □	10	0.061	4.00
SCI8D43-150 □	15	0.075	2.00
SCI8D43-220 □	22	0.100	1.50
SCI8D43-330 □	33	0.200	1.30
SCI8D43-470 □	47	0.250	1.20
SCI8D43-680 □	68	0.260	1.10

* 100uH 以上 Test Frequency : 1KHZ/1V

* 100uH 以下 Test Frequency : 100KHZ/0.1V